



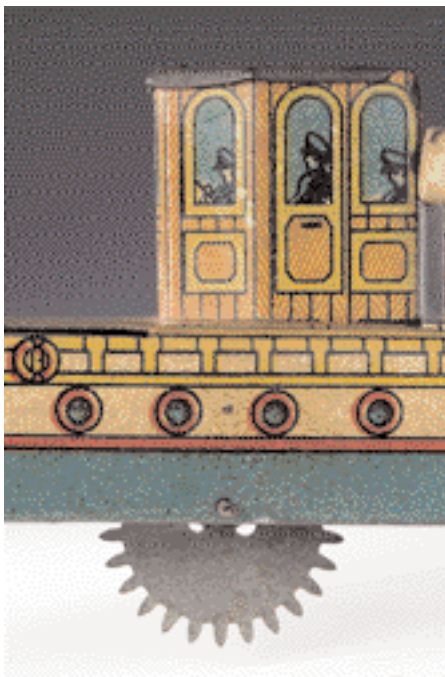
Clockwork sightseeing boat *Le Touriste* in the water, by Marklin, 1904-8 © MnM-Photo Arnaud Fux.eps



Steam-propelled battleship, *Salamandre*, France, late 19th century © MnM.eps

The National Maritime Museum Presents: Toy Boats 1st May - 31st October 2010

This May London's National Maritime Museum launches *Toy Boats*, an enchanting exhibition featuring miniature ocean liners, toy paddle steamers, tin battleships and clockwork submarines alongside, games, catalogues and photographs, all produced in Europe between 1850 and 1950. *Toy Boats* runs from 1st May until 31st October and admission is free.



Clockwork aircraft boat, *Espana*, by Paya, about 1930 (detail) © MnM-Photo Arnaud Fux.eps

For more than 100 years the craze for things maritime drove toy companies to make toy boats of every size and description, capturing the imagination of generations of children and creating a sense of adventure and excitement. At a time when Britain was the world's greatest industrial and maritime power, toy boats were as fascinating to children as computer games are today.

From the mid nineteenth century, as nations raced each other to build bigger and better ships, toy makers were swift to exploit the publicity and follow-up with toys that captured the spirit of these famous vessels. The methods used in toy-boat propulsion varied from twisted rubber bands and clockwork springs to early batteries and real fired-up burners producing steam. The show traces these developments through toy boats made by celebrated toy makers in Europe including Gerbrüder Bing, Marklin, Radiguet, Bassett-Lowke, Hornby and Sutcliffe.

Late nineteenth century town planning across Europe introduced new parks with decorative ponds and fountains, which gave children a space to play with toy boats. This, along with the increase in family seaside holidays, created an appeal which inspired toy makers to compete in creating finer and more sophisticated ships, which also appealed to adults as collectors' curios. Germany was the market leader and famous for quality tin toys which were exported around the world. Gerbrüder Bing, the world's largest toy company, employed over 5,000 people in its Nuremberg factory, whilst France was

Germany's biggest competitor with companies such as Radiguet, renowned for making elegant beautifully finished vessels.

The Exhibition looks at the way toy boats were marketed through advertising, packaging and catalogues. The advent of department stores, and their use of large plate-glass shop fronts, offered a new way to showcase merchandise and entice customers and the exhibition recreates an Edwardian shop window. Archive film footage shows Ron McCrindle, a toy boat enthusiast, who has amassed one of the finest collections in the UK, sharing his passion for these miniature vessels.

Kristian Martin, curator of the exhibition said: "These miniature boats are a glimpse into a bygone era when every town had a boating lake and children learnt about Britain as a maritime nation through toy boats. They also tell of a rapidly changing world and the developments in technology in childrens' toys."

A series of free special events for all ages will accompany the exhibition.

Visitor Information:

The National Maritime Museum, Romney Road, Greenwich, London SE10 9NF.
Opening hours: 10am to 5pm every day.
Last admission is at 4.30pm. Admission free. www.nmm.ac.uk Tel: 020 8858 4422.

Editor's Note: To accompany this Exhibition I have attached a selective Price Guide to model ships and boats in the price range £5,000 down to about £40. This has been downloaded from our Website Database at www.antiques-info.co.uk



1
Napoleonic model 48 gun ship, made by prisoners of war from bone, 14in. *Stride & Son, Chichester. Nov 02. HP: £4,300. ABP: £5,057.*



2
Fine quality ship builders' hardwood model of a torpedo boat destroyer, c1900-10, silvered fittings, in original display case, 29in. *Gorringes, Lewes. Dec 09. HP: £4,200. ABP: £4,940.*



3
Scale model, early 19thC French line-of-battleship, built by Napoleonic prisoners of war, in bone, *Golding Young & Co, Grantham. Jun 00. HP: £3,900. ABP: £4,587.*



4
Scale model of first Orkney Lifeboat, presentation plaque, display case, 89cm long. *Hobbs Parker, Ashford. Sep 07. HP: £3,400. ABP: £3,999.*



5
Bone scale model of a sail ship, 19thC, possibly French Prisoner of War, 3 masted 46 gun ship, carved figurehead, planked/pinned hull, baleen gun whales, 16in wide, glazed ebonised case. *Hartleys, Ilkley. Sep 09. HP: £2,700. ABP: £3,175.*



6
19thC prisoner of war bone work model of a fighting ship with rigging, guns and base, housed in a later glass dome. *Wotton Auction Rooms, Wotton under Edge. Aug 08. HP: £2,400. ABP: £2,823.*



7
Marklin tinplate battleship, c1905-10, single screw clockwork mechanism, working capstan, 28.5in long, repainted, guns, funnels & lifeboats missing, metal corrosion. *Gorringes, Lewes. Mar 03. HP: £2,300. ABP: £2,705.*



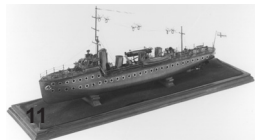
8
20thC model ship of the French three masted Man of War 'Superbe', fully rigged, finely detailed, natural wood decking/hull, 44in long. *Lots Road Auctions, Chelsea. Aug 00. HP: £2,200. ABP: £2,587.*



9
Vintage clockwork Warship, 75cm long, two funnels, grey upper hull/superstructure, red decks, brown lower hull, painted port holes, lacking lifeboats & some deck fittings, rudder & a derrick detached but present, clockwork motor with key, needs restoration, believed to be by Fleischmann. *Vectis Auction Group, Buckingham. Nov 04. HP: £2,000. ABP: £2,352.*



10
Ship maker's half model of the steam trawler 'Gambri' of Jimsby built by Cook, Welton and Gemmel Ltd. of Beverley in 1929, metal deck and fittings and painted features, mahogany mirror backed display cabinet, 113cm wide by 43cm high, associated paperwork. *Brown & Co, Brigg. May 07. HP: £1,900. ABP: £2,234.*



11
Model of HMS Maori, torpedo boat destroyer 1909-1915, in glazed walnut case. *Gorringes, Lewes. Oct 99. HP: £1,500. ABP: £1,764.*



12
Ship builders half block model of the 'Reggio, built by Irvine & co. West Hartlepool, 1889', wooden hull painted black/cream, mahogany framed glazed cabinet, 69.5in long, 17.5in high. *Peter Wilson, Nantwich. Nov 00. HP: £1,500. ABP: £1,764.*



13
1930s Hoge MFG, Co. Inc. No. 268 'Popeye the Sailor', clockwork, painted tinplate model boat and figure, 15in long, boxed. *Amersham Auction Rooms, Bucks. Nov 03. HP: £1,000. ABP: £1,176.*



14
Polished and painted wood speedboat, single propeller, operating rudder and clockwork mechanism, 36in, on stand. *Gorringes, Bexhill. Mar 02. HP: £760. ABP: £893.*



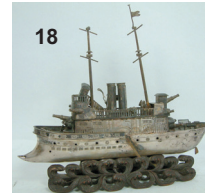
15
Prisoner-of-war bone model of a 68-gun ship, early 19thC, length 16.75in. *David Duggleby, Scarborough. Dec 99. HP: £700. ABP: £823.*



16
Scale model, The Stormking, wartime Admiralty deep sea tug, grey-painted metal, black beneath the waterline, fitted with lifeboats, gun and Stuart live steam engine, 44in. *Gorringes, Lewes. Dec 04. HP: £550. ABP: £646.*



17
'Grenville' Destroyer, clockwork, grey with red lower hull, 12.75in long, key, post war issue (1948-1950), manilla box with 'Hot Air Model Warships' label. *G. Hartleys, Ilkley. Mar 09. HP: £540. ABP: £635.*



18
Chinese white metal model of a gun boat, after Jules Verne, wave carved wooden stand. 20thC, 27cm high x 28cm long. *Rosebery's, London. Sep 04. HP: £500. ABP: £588.*



19
1930s clockwork action tinplate toy passenger ship. *Richard Winterton, Burton on Trent, Staffs. Oct 01. HP: £500. ABP: £588.*



20
Victorian split hull model of a fishing boat 'The John', mounted on painted wooden background of a headland with statue lighthouse, ruin & houses, gilt gesso framed, 19 x 34.5in. *Gorringes, Lewes. Apr 08. HP: £500. ABP: £588.*



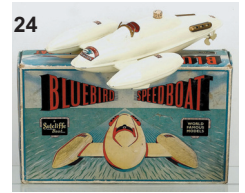
21
Chad Valley Waterline Ship Set: 'The Cunard Fleet - Fastest Ocean Service in the World', 5 hollowcast lead ship models, rare & unusual set. *Vectis, Thornaby. Oct 07. HP: £460. ABP: £541.*



22
Model of fishing boat 'Comet Star', in glass case. *Great Western Auctions, Glasgow. Nov 08. HP: £430. ABP: £505.*



23
Scale model of the tall ship Alabama, American confederate commerce raider, modelled by E. A. Everett, explanatory plate and print illustrating its fatal battle with the Kearsarge in 1864, glass case, 30in overall. *Gorringes, Lewes. Jul 04. HP: £420. ABP: £494.*



24
Tri-clocked motored model of a gun boat, after Jules Verne, wave carved wooden stand. 20thC, 27cm high x 28cm long. *Rosebery's, London. Sep 04. HP: £500. ABP: £588.*



25
Contemporary Tucher & Walther German tinplate T450 U-Boat, 'U35', 26in long, 8.5in to top of periscope, painted light grey, red lower hull, rubber planes, working model with battery powered motor and Tucher & Walther tinplate floating dock. *Wallis & Wallis, Lewes. Apr 07. HP: £410. ABP: £482.*



26
Clinker built model of a sailing boat, 108cm long. *Charterhouse, Sherborne. May 09. HP: £400. ABP: £470.*



27
'Rocket' boat, by Kokusai Mokei Co Ltd, Japan (K.M.K.) painted wood construction, futuristic stream-lined design, battery powered electric motor, 20in long, boxed. *Andrew Hartley, Ilkley. Mar 03. HP: £380. ABP: £446.*



28
Scale model of the German battleship Bismark, 6ft 5in long. *Great Western Auctions, Glasgow. Jun 06. HP: £380. ABP: £446.*

Toys & Models

Selection of Ships and Boats from our Database at www.antiques-info.co.uk



Sutcliffe 'Sooty's Speedboat', and a 'Jupiter' Ocean Pilot Cruiser, clockwork tinplate, boxed, F. (2) Hartleys, Ilkley. Mar 09. HP: £380. ABP: £446.



Late 19thC half model ship with painted decoration and mirrored glass panels, original cork frame, 50 x 61cm overall. Reeman Dansie, Colchester. Apr 06. HP: £360. ABP: £423.

Images are in descending hammer price order. The price range is indicated at the start of each section.



Hornby speed boat 'Viking' clockwork powered with sliding hatch, 17in long, box AF, F-G Hartleys, Ilkley. Oct 09. HP: £320. ABP: £376. £280. ABP: £329.



Early 20thC painted wooden waterline model of a full rigged 3 masted ship, glazed painted wooden display case, 78.5cm wide, and all wood model of a 3 masted sailing vessel, smaller. (2) Rosebery's, London. Mar 08. HP: £280. ABP: £329.



Tinplate clockwork boat, original box, made by Hornby's in 1930s, some rust on rear of hull. Wallis & Wallis, Lewes. Oct 06. HP: £280. ABP: £329.



'Minx' speedboat, clockwork but motor missing, hinged perspex windscreen, stained wood and cream painted deck, red hull, 12.5in long, pre war model 1930-1939, in post war 'Hawk' box, F-G Hartleys, Ilkley. Mar 09. HP: £270. ABP: £317.



'J.W. Sutcliffe', live steam model warship, 41cm long, in it's maker's carton with printed instructions, af. Rosebery's, London. Mar 06. HP: £260. ABP: £305.



Old wooden ship's model on stand of HMS Chichester, 80cm. Reeman Dansie, Colchester. Apr 06. HP: £260. ABP: £305.



Hobbies Bowman speedboat 'Snipe', painted wood and tin construction, spirit fired steam engine, single screw, 23in long, wooden box, c1928. Andrew Hartley, Ilkley. Sep 05. HP: £250. ABP: £294.



Hornby, Meccano Ltd, a tin plate clockwork speedboat 'Venture', in yellow and red livery, boxed with key, 43cm. Locke & England, Leamington Spa. Mar 06. HP: £250. ABP: £294.



Sailing ship model, HMS Gloucester 1737, 4th Rate, 88cm long. Thos Mawer & Son, Lincoln. Apr 02. HP: £250. ABP: £294.



Collection of Tri-ang Minic diecast waterline ships incl. RMS Aquatania, HMS Vanguard, dock items etc and small model of the Mauritania, 'made from decking of herself'. Rosebery's, London. Jun 04. HP: £250. ABP: £294.



Late 19thC cased model 3 masted ship, back panel painted with a harbour wall and two other small sailing vessels at sea, 32.5in. Gorrings, Lewes. May 09. HP: £240. ABP: £282.



Late 19thC cased half ship model of a steamer, flying the Red Ensign, against painted back plate, 17 x 36in. Gorrings, Lewes. May 09. HP: £230. ABP: £270.



Sutcliffe Model Bluebird clockwork speedboat, single hulled streamlined record craft, 11in long, white/mid blue livery with gold painted detailing, clockwork motor, single propeller, Bluebird logo, original box, minor wear. Wallis & Wallis, Lewes. Jul 05. HP: £210. ABP: £247.



Scale model of the sailing ship Cutty Sark. Great Western Auctions, Glasgow. Jan 08. HP: £210. ABP: £247.



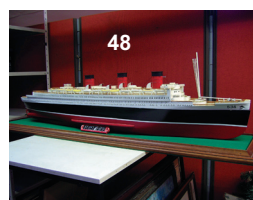
Sailing ship model, Alert 1818, 74cm long, wooden stand with brass plaque with maker's name D H Byford. Thos Mawer & Son, Lincoln. Apr 02. HP: £200. ABP: £235.



Riva speedboat 'Iseo', high quality moulded plastic with bright trimming, wood grain finish above a green lower hull, flag mast, windscreen, driver and passenger seated in front seats, battery driven, adjustable rudder, c1950 by Lima (No 2404), original box, instruction leaflet. Wallis & Wallis, Lewes. Jul 05. HP: £200. ABP: £235.



Diorama, 3 masted scratch built ship and tug, presentation plaque 'Barque Garfield, by Captain Daniel Morgan of Aberdovey, 1860-1943', stained case, 65cm wide, 45.5cm high, 28cm deep. Halls Fine Art, Shrewsbury. Jul 07. HP: £200. ABP: £235.



Model of RMS Queen Mary of the Cunard Line steam ship, glazed case, 170cm wide, with cased mechanical workings of model ship, 63cm wide. (2) Locke & England, Leamington Spa. Mar 08. HP: £200. ABP: £235.



Early 20thC painted model tall ship, 4 masts, textured sea, in chamfered oak case, 19.5in. Gorrings, Lewes. Dec 08. HP: £180. ABP: £211.



Pond yacht with sails, varnished to the water line and painted below, 23.5in long, by the Siddal Boat Builders, Bridlington. Dee, Atkinson & Harrison, Driffield. Jan 04. HP: £170. ABP: £199.



'Valiant' battleship, clockwork, grey decks, black lower hull and rudder, 13in long, (pre-war issue 1928-1939), key, no box, some rust to superstructure, lower hull slight dent, probably repainted, rudder repaired, good for age. Hartleys, Ilkley. Mar 09. HP: £170. ABP: £199.



Early 20thC scratch built model of a steamship, wood and tinplate, rubber band driven, 3ft.3in, and another similar model ship, 3ft. Gorrings, Lewes. Apr 02. HP: £160. ABP: £188.

The prices quoted are actual Hammer Prices (HP) followed by the Approximate Buyer's Price (ABP) which includes an average buyer's premium of 15% + VAT.



Scratch built, full rigged, triple masted, model galleon, 20thC, fitted with bow sprit, metal deck furniture & sails, mounted under glazed cabinet, boat 48cm high x 46cm long. Rosebery's, London. Oct 06. HP: £160. ABP: £188.



Scratch Waterline model of a tug boat Napier, wooden case, 20in. Gorrings, Lewes. Feb 09. HP: £160. ABP: £188.



Tinplate clockwork boat 'Windsor Castle'. George Kidner, Wimborne. Mar 09. HP: £160. ABP: £188.



Tinplate clockwork four man rowing boat with coxswain, oars missing and clockwork mechanism defective, 9.5in wide. Tring Market Auctions, Herts. Jan 04. HP: £150. ABP: £176.



Set of Dinky Toys ships of the British Navy, set No 50, with numerous vessels incl. HMS Nelson, Effingham, Rodney, Hood, and two submarines, boxed. *Charterhouse Auctioneers, Sherborne. Dec 08. HP: £140. ABP: £164.*



'Bluebird 1' speedboat, clockwork, white deck, blue hull, 11in long, post war manufacture 1948-1967 then final 100 re-issued 1979), key, blue and red printed box AF, mint. *Hartleys, Ilkley. Mar 09. HP: £120. ABP: £141.*



Model ship in a glazed case. *Crows, Dorking. Sep 01. HP: £120. ABP: £141.*



'Valiant' battleship, (1979-1980 replica of original produced 1920), clockwork, 12.75in long, key, mast, flag and stand, boxed, mint. *Hartleys, Ilkley. Mar 09. HP: £120. ABP: £141.*



Clockwork speed boat similar to 'Tiger', probably a one-off, white deck, blue hull, 10in long, c.1969, with key, white box, hand written, G-E. *Hartleys, Ilkley. Mar 09. HP: £110. ABP: £129.*



'Bluebird 1' speedboat, clockwork, white deck, blue hull, 11in long, (post war manufacture 1948-1967, then final 100 re-issued 1979), key, plain manilla box, mint. *Hartleys, Ilkley. Mar 09. HP: £110. ABP: £129.*



63 Unda-Wunda submarine, clockwork pale blue, boxed, 10in long, G, and a Victor motor torpedo boat, clockwork, white deck, blue hull, 9.5in long, F. (2) *Hartleys, Ilkley. Mar 09. HP: £110. ABP: £129.*



64 'Victor' motor torpedo boat, clockwork, white deck, blue hull, 9.75in long, (1970-5 and 1978-81), key and radio mast, slight rust, G, box G-E, 1969. *Hartleys, Ilkley. Mar 09. HP: £100. ABP: £117.*



65 'Bluebird 1' speed boat, clockwork, white deck, blue hull, 11in long, (post war manufacture 1948-1967, final 100 re-issued 1979), key, plain manilla box AF, mint. *Hartleys, Ilkley. Mar 09. HP: £95. ABP: £111.*



66 Sutcliffe Valiant clockwork powered battleship, black bower and grey upper hull, deck and superstructure, twin funnels, twin gunned turrets fore and aft with high bridge, ensign, mast and key, hull stand, original box, as new. *Wallis & Wallis, Lewes. Nov 04. HP: £95. ABP: £11*



67 'Racer 1' speedboat, clockwork, cream deck and red hull, original version (1932-1934), with blue sliding deck hatch, 10in long, key; in later early post war box, G-E. *Hartleys, Ilkley. Mar 09. HP: £95. ABP: £111.*



68 'Racer 1' speed boat, clockwork, cream deck and red hull, original version (1932-1934), with blue sliding deck hatch, 10in long, key, plain manilla box, G-E. *Hartleys, Ilkley. Mar 09. HP: £95. ABP: £111.*



69 'Minx' speed boat, white deck with mahogany hatch, white/red hull, clockwork, 12.5in long, (90 issued in 1980), key, 'Hawk' box with overpainted sticker, mint. *Hartleys, Ilkley. Mar 09. HP: £85. ABP: £99.*

This section is only a sample from 1000s of results from recent sales. See our website for an extensive selection.



70 'Zodiac' electric speed boat, battery powered, stained plywood and red plastic deck, white plastic hull, 16in long, (1960-1965), rust to rudder; motor and switch faulty, F, box complete but bruised. *Hartleys, Ilkley. Mar 09. HP: £80. ABP: £94.*



71 'Comet' speed boat, clockwork, all yellow, 10.75in long, (first made 1955, this example probably 1980), key, white card box with label, mint. *Hartleys, Ilkley. Mar 09. HP: £70. ABP: £82.*



72 'Tiger' speed boat, clockwork, white deck, blue hull, 10in long, (1969-1978), key, white box rubber stamped, G-E. *Hartleys, Ilkley. Mar 09. HP: £70. ABP: £82.*



73 'Merlin' speed boat, battery powered electric motor; cream deck, red hull (no flag), 13.25in long, (1963-1980), slight rusting to deck, G, box F-G. *Hartleys, Ilkley. Mar 09. HP: £70. ABP: £82.*



74 Wooden, grey painted, radio controlled 'E' Type Torpedo Boat, wooden stand, 36in long. *Fellows & Sons, Brimingham. Oct 03. HP: £60. ABP: £70.*



75 Model boat on stand. *Great Western Auctions, Glasgow. Sep 08. HP: £60. ABP: £70.*



76 Model of two masted sailing ship in full sail, life boats, deck fittings etc. named La Toulonnaise. *Kent Auction Galleries, Folkestone. Jul 05. HP: £55. ABP: £64.*



77 Sutcliffe Hawk speed boat, clockwork, white deck, green hull, boxed, E. *Hartleys, Ilkley. Mar 09. HP: £55. ABP: £64.*



78 Model of a ship. *Great Western Auctions, Glasgow. Mar 08. HP: £50. ABP: £58.*



79 'Minx' speedboat, clockwork, plastic construction, red and yellow deck, white hull, 13.75in long, key, (1960), G, motor working but rusty, in later 'Valiant' lid. *Hartleys, Ilkley. Mar 09. HP: £50. ABP: £58.*



80 'Merlin' electric speed boat, battery powered, white deck and red hull, 13in long, box AF, F. *Hartleys, Ilkley. Mar 09. HP: £45. ABP: £52.*



81 Sutcliffe Models 'Meteor' speed boat, plywood/plastic construction, white hull, clockwork powered, 16in long, boxed, G. *Hartleys, Ilkley. Oct 09. HP: £40. ABP: £47.*



82 Wooden pond launch, 79cm long, and two other pond boat hulls aff (3). *Rosebery's, London. Mar 06. HP: £35. ABP: £41.*



83 Wooden model ship, 'King of Mississippi', 61cm long, one strut requires attaching, in glass fronted display cabinet. *A F Brock & Co Ltd, Stockport. Aug 05. HP: £35. ABP: £41.*



84 Dinky Toys O.S.A 2. Missile Boat, 672, bubble pack. *Charterhouse, Sherborne. Dec 09. HP: £35. ABP: £41.*